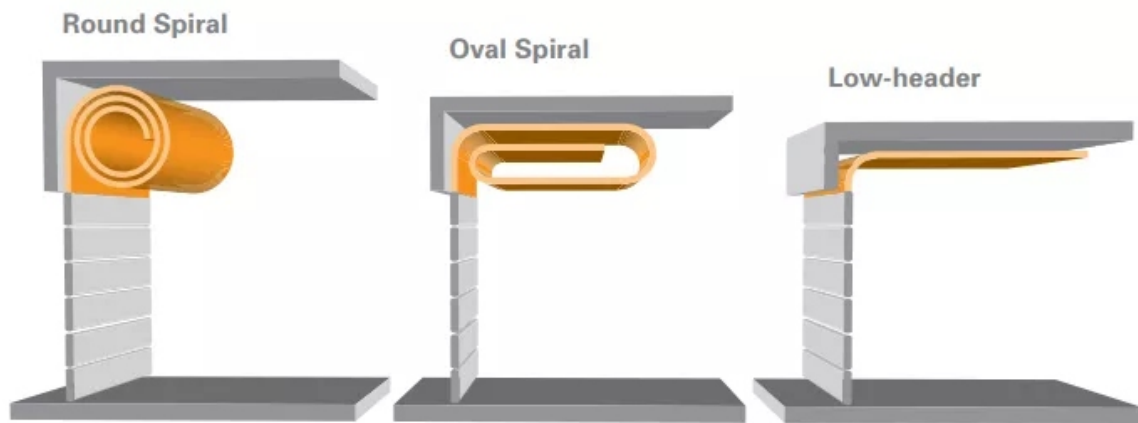


## Industrial Sectional Door

### SPIRAL Door

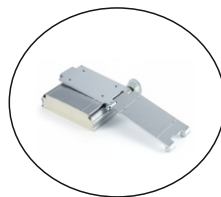
#### Key Features :

- **Type:** High-speed, rigid rolling door.
- **Mechanism:** Rigid panels roll up into a non-contact, circular spiral track (reduces wear).
- **Speed:** Very fast operation (up to 2.5 m/s) for high-traffic flow.
- **Insulation:** Excellent thermal performance from thick, foam-filled rigid aluminum/steel panels.
- **Energy Efficiency:** High speed + insulation minimizes air exchange and reduces energy costs.
- **Durability:** Designed for a very high number of cycles (often millions) with low maintenance.
- **Structure:** Rigid slats provide superior security and high wind resistance.
- **Space:** Saves ceiling space, as tracks do not run far back into the building interior.
- **Application:** Ideal for cold storage, logistics, and high-security exterior openings.
- **Safety:** Equipped with modern safety features like light barriers and anti-crash systems.

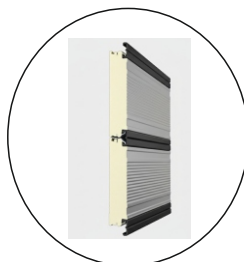


#### Manual opening device for emergency use

Each door will have a manual opening device fixed on its side frame. If there is power failure, pull up the manual device, and the door will open itself for some height, for emergency opening.



- Panel Type: Roll forming with PU
- Total Thickness: 40mm
- Material: Aluminum sheet
- Material Thickness: 0.70mm
- Covering Height: 185mm



The panels are connected by a rubber seal

